



Innovation Beyond Technology

# DAEDONG GROUP

---

## Company Introduction



# CONTENTS

---

## DAEDONG GROUP Introduction

- 
- 04 Prologue
  - 05 Our Vision
  - 06 Overview
  - 07 Business Area
  - 08 Our History
  - 09 Global Business Status

---

## DAEDONG GROUP Production Line

- 
- 11 Hood Latch
  - 12 Side Door Latch
  - 13 Slide Door Latching System
  - 14 Door Cheaker
  - 15 Tailgate Latching System
  - 16 MPV
  - 17 Sedan
  - 18 Suv
  - 19 Daedong's Sustainability goals
  - 20 Sustainability and Engagement Program

---

## DAEDONG ESG

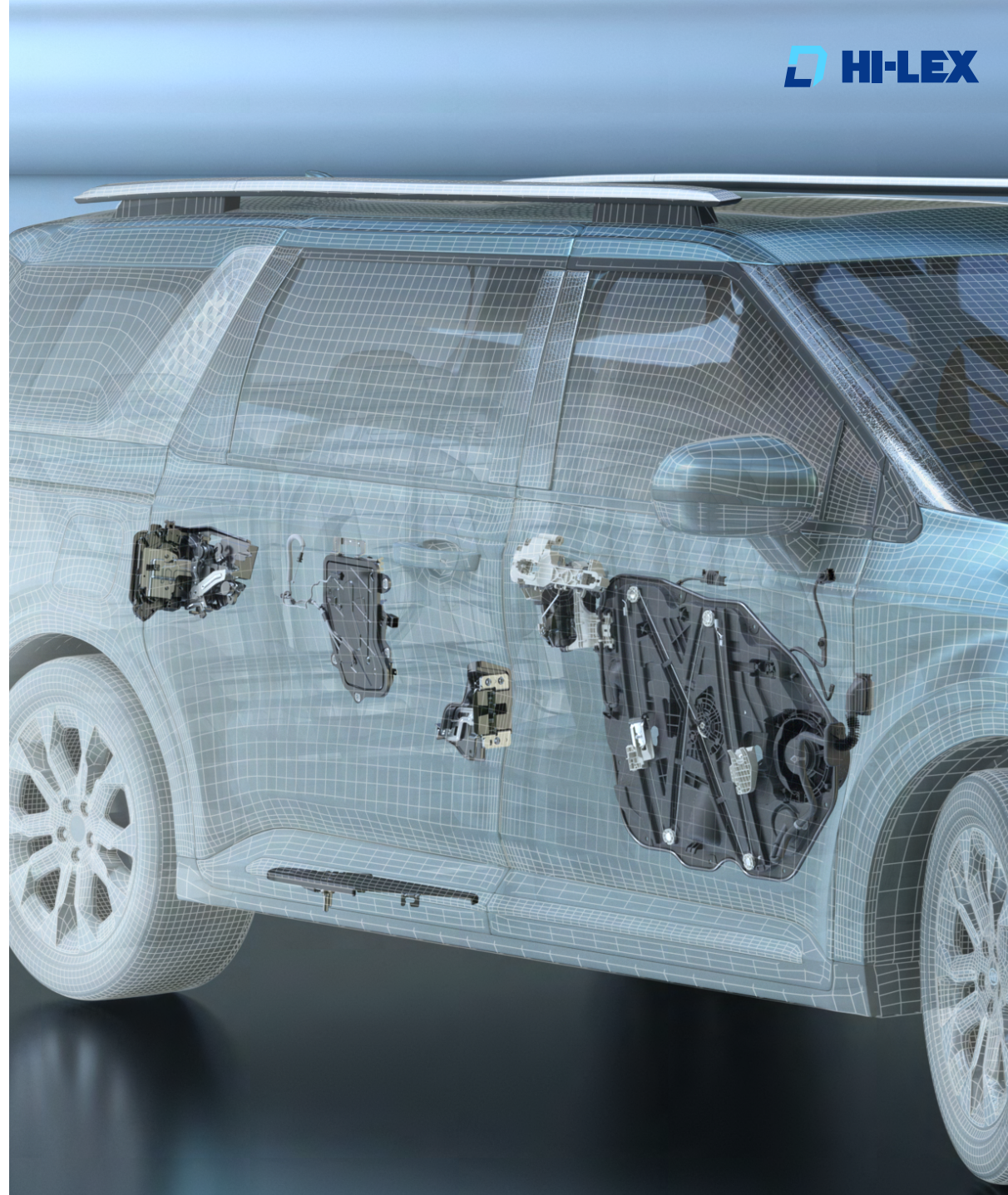
- 
- 21 Contact



---

# DAEDONG

## Introduction





# Prologue

## Innovative Technology Solutions

Since its founding in 2003, **DAEDONG HI-LEX** and **DAEDONG DOOR** have grown into a global automotive component company in the field of automotive door mechatronic systems through relentless research and development, technological innovation, and a spirit of challenge.

## Customer Satisfaction

We prioritize the maximization of customer satisfaction as the utmost value in our management approach. Leveraging our global network and accumulated capabilities, we aim to become a trusted partner for our customers.

To realize customer satisfaction, we possess top-tier technical expertise and state-of-the-art production facilities. We continually pursue change and innovation to secure global-level technology and products.

## Pioneering Spirit for Sustainable Growth

**DAEDONG HI-LEX** and **DAEDONG DOOR** aspire to be a leading company in a rapidly changing business environment and evolving automotive industry paradigm. Through a flexible and dynamic organizational culture, we will continue to contribute to our customers, members, society, and the environment.

Hak Sung Song 





# Our Vision

## YOUR TRUSTWORTHY PARTNER FOR AUTOMOTIVE CLOSING MECHANISM SOLUTIONS

### Electrification ●

The electrification of automobiles is an essential and inevitable technology for enhancing customer comfort and convenience. Intelligent networks of sensors and actuators will introduce users to new functional experiences.

### Automation ●

In a multi-variety, large-scale production system, achieving production automation improvements will lead to quality stability and continuous productivity enhancements.

### Safety ●

Enhancing safety is essential in the era of autonomous mobility. We are committed to developing mechanisms that customers can trust and rely on through the strengthening of safety features.

### Integration ●

As an integrated door closing mechanism specialist, we will enhance our technological capabilities, moving away from the combination of individual elements such as door latch, ECU, module, and focus on providing intelligent door closure systems.

# Overview

## About Daedong

Daedong HI-LEX Group is an automobile parts company that has focused its expertise and capabilities on automotive door access systems. The company offers technically high-quality and intelligent safety closure and drive systems. The system comprises (1) Door Components, (2) Door system (3) Power Liftgate Systems and provides greater convenience and comfort. Daedong HI-LEX Group will go further by developing electronic technology as well as sensor technology that allow future mobility devices to be interconnected each other.

Company Name	Daedong HI-Lex / Daedong Door
Headquarters	<b>Daedong HI-Lex</b> 43, Namdongdong-ro 78beon-gil, Namdong-gu, Incheon, Republic of Korea  <b>Daedong Door</b> 21 64, Cheomdan-daero 124beon-gil, Yeonsu-gu, Incheon, Republic of Korea
President & CEO	Song Hak Sung
Date of Establishment	2003
Business Type	Door Component / Door System / Power Liftgate System



## Major Financial Performance

Unit : in thousands USD

	2023	2022	2021
<b>Total assets</b>	<b>279,974</b>	270,819	222,882
Total liabilities	107,337	110,411	89,398
Equity	172,638	160,408	133,484
<b>Sales</b>	<b>540,550</b>	444,504	399,565
Gross Profit	70,362	51,829	45,951
<b>Operating Profit</b>	<b>28,090</b>	18,787	14,600
Profit before income taxes	30,594	30,965	18,842
Net income	30,565	20,233	14,537

Unit : in thousands USD

### Total assets



### Sales



### Operating Profit



# Business Area

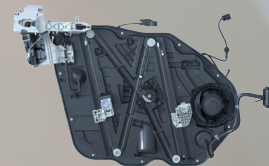
## Automotive Door Closure systems & components

With ambitions to be a hundred-year company in the era of electrification, Daedong HI-LEX Group is expanding its investment in future door access solutions with innovative product developments. One of these new product developments is a new door system for Kia's PBV (Purpose Built Vehicle). To become a global technology leader for locking systems, Daedong HI-LEX Group provides differentiated mobility solutions that combine hardware and software and seeks for new business opportunities with core R&D capabilities and efficient automated manufacturing systems/processes.

### Door Component



### Door System

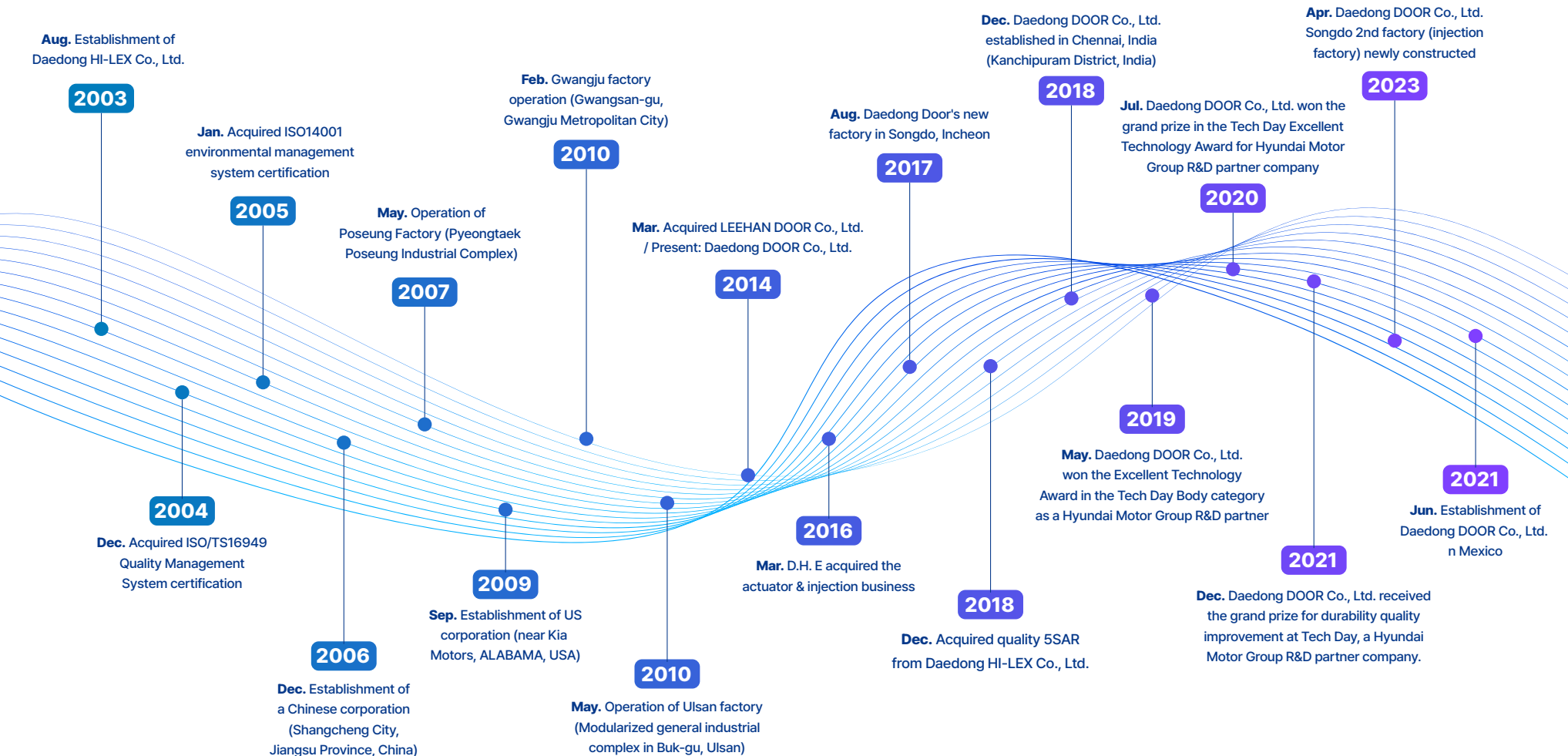


### Power Liftgate System

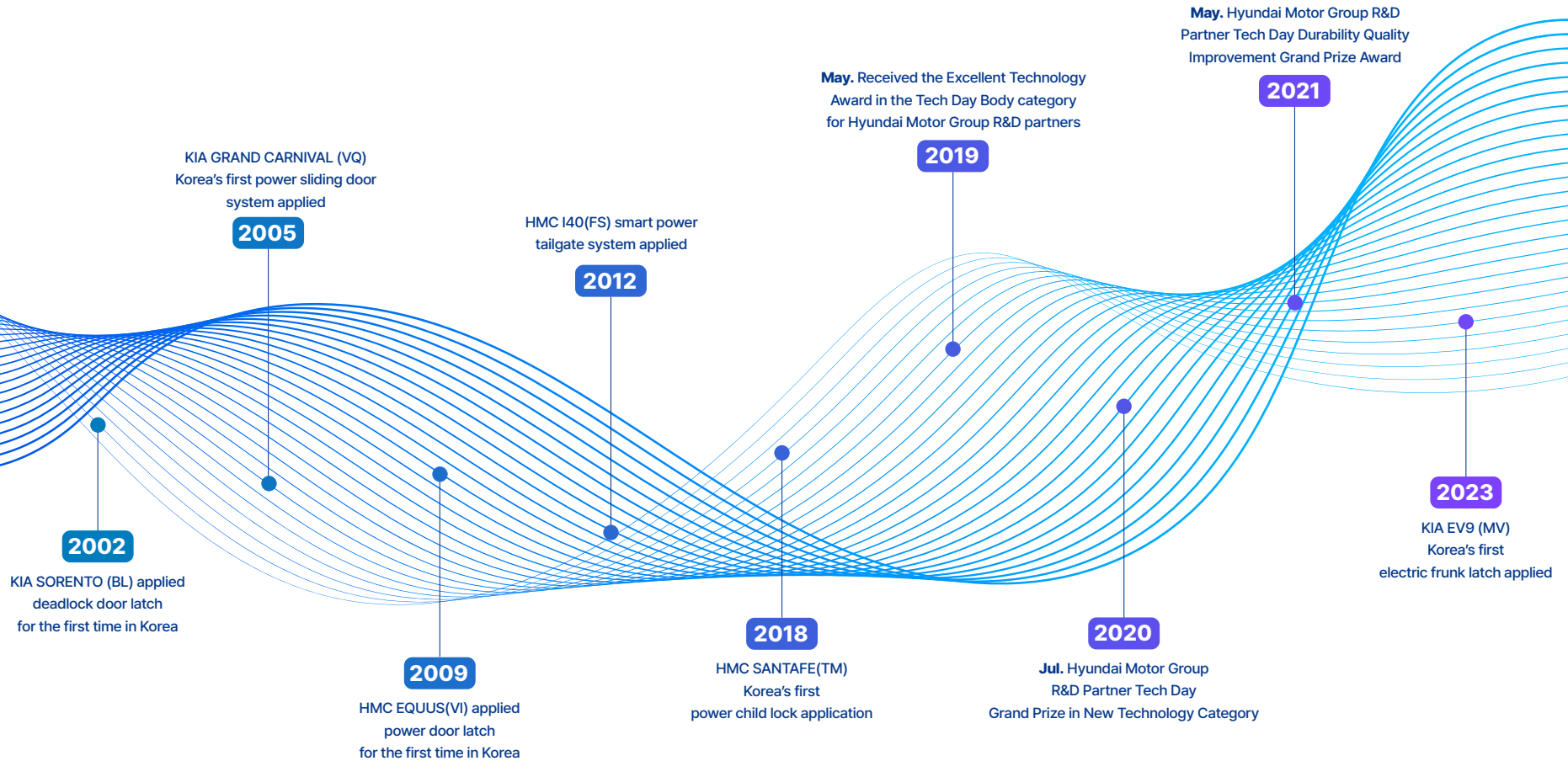




# Our History



# Our History






# Global Business Status

<b>HI-LEX GROUP</b>	<b>15 countries</b>	6 Asia, 2 North America, 1 South America, 6 Europe
<b>DAEDONG HILEX</b>	<b>3 countries</b>	4 South Korea, 1 China, 1 USA : TOTAL 6 locations
<b>DAEDONG DOOR</b>	<b>5 countries</b>	2 South Korea, 1 Mexico, 1 India, 1 China, 1 Indonesia : TOTAL 6 locations



## Employment status by department

		Korea	Overseas
 HQ(R&D)	DAEDONG HI-LEX	1	-
	DAEDONG DOOR	1	-
 Total Employees	DAEDONG HI-LEX	200	177
	DAEDONG DOOR	282	81
 Manufacturing Centers	DAEDONG HI-LEX	4	2
	DAEDONG DOOR	2	4

Overseas Branch  
Offices

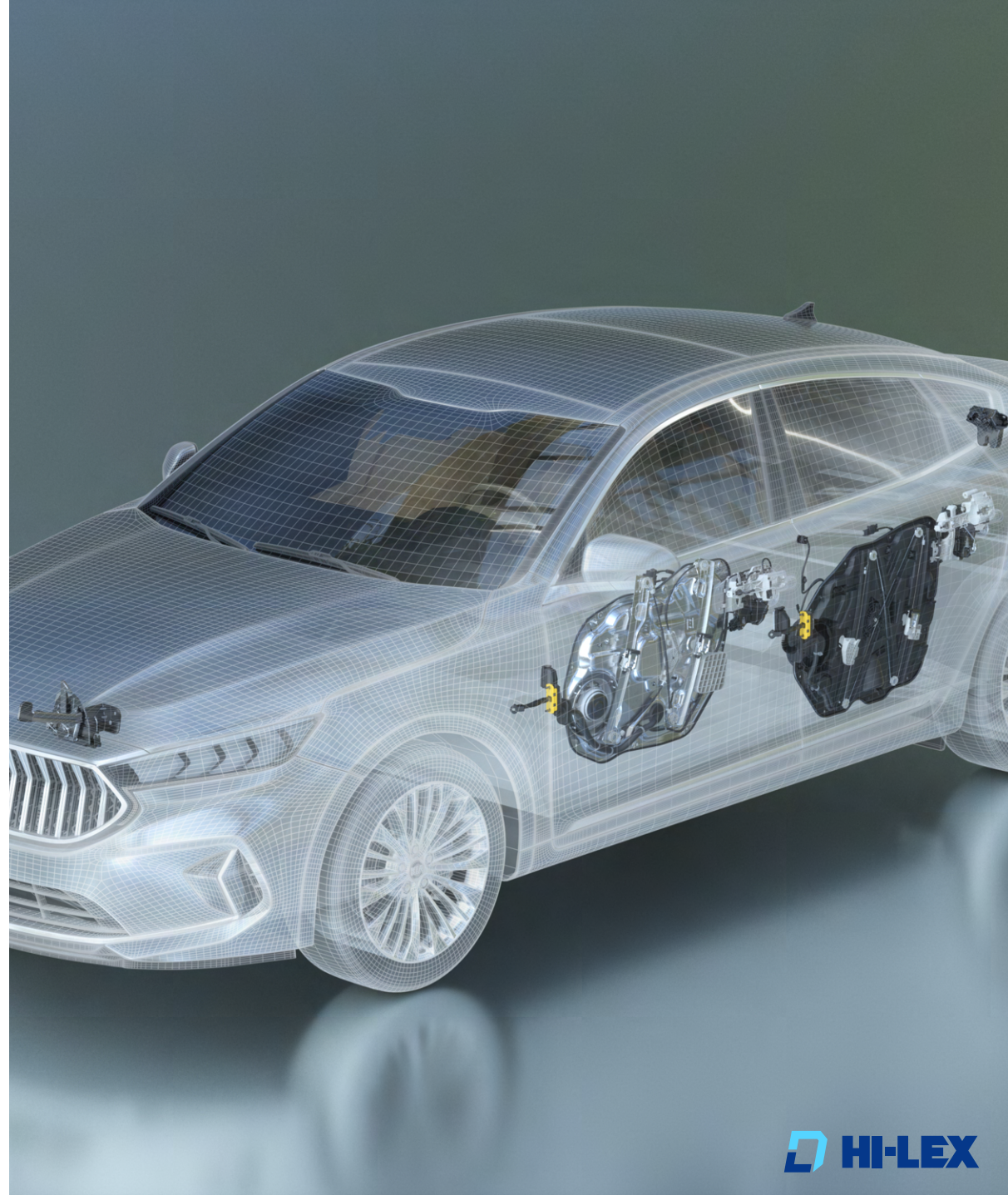
6



---

# DAEDONG

## Production line



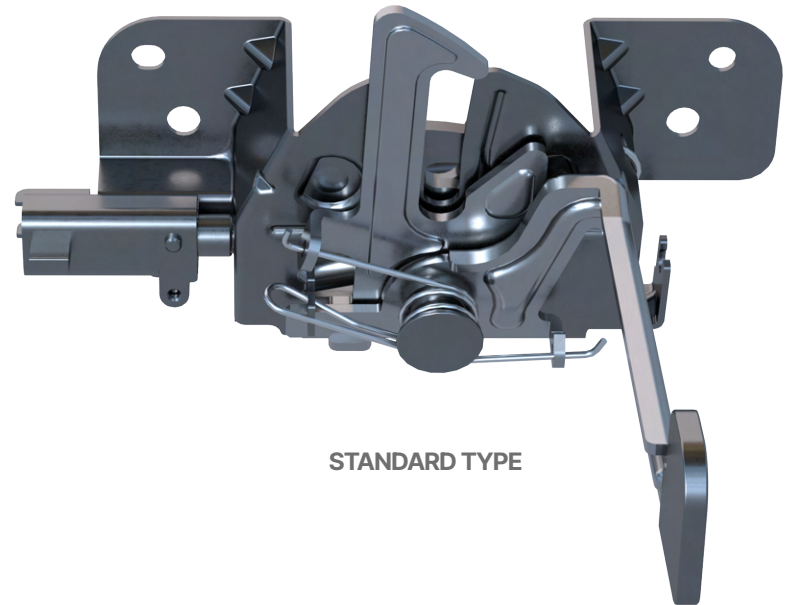
## Hood Latch

The Front End Module (FEM) is installed on the vehicle's body, and when the hood is closed, it remains locked in place by engaging with the striker mounted on the hood.

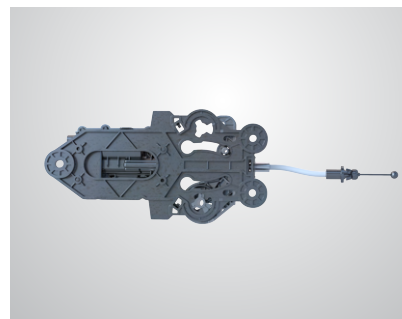
To open the hood, you need to pull the Hood Open Lever located beneath the driver's seat. When you do this, the Hood Latch is partially released, causing the hood to pop up. With the hood in the popped-up position, you can reach your hand between the gaps and operate the Lever (Hook Safety) to fully open the hood.

### Main Function

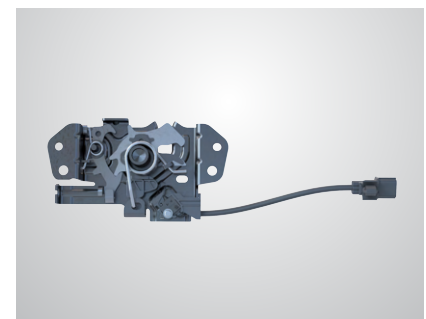
- Hood Closure Hold Function
- Double Locking & Release Function
- Release Function by Mechanical & Electricity



STANDARD TYPE



HOOD LATCH RELEASE ACTUATOR



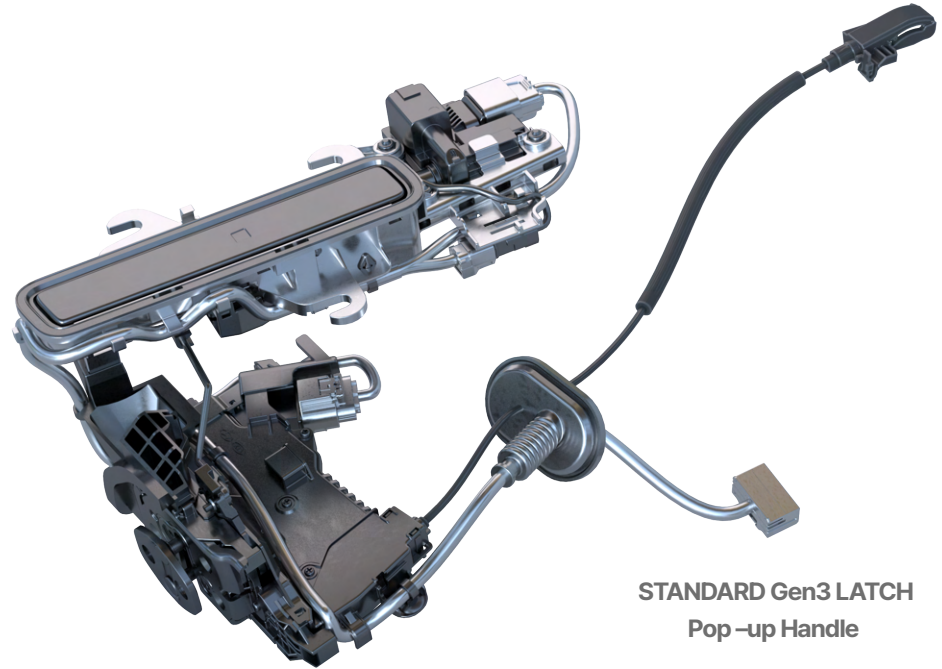
EV TYPE

## Side Door Latch

The panel installed inside the car's side door, when connected to the vehicle's striker mounted on the body, maintains the door's locked state. It can be opened using the door handle (inner/outer) and the cable (rod) connected to it. The door can be opened by operating the handle. There is a knob on the inner handle side, and the door's lock / unlock status can also be controlled from the outside using a key, or electronically (via trim buttons or a remote control). Additionally, there are various convenience features associated with it.

### Main Function

- Side Door Closure Hold Function
- Central Lock/Unlock Function
- Door Opening Function with Outside & Inside Handle
- Door Ajar Sensing function
- Child Lock (Child Safety Function)



STANDARD Gen3 LATCH  
Pop-up Handle



COMPACT LATCH



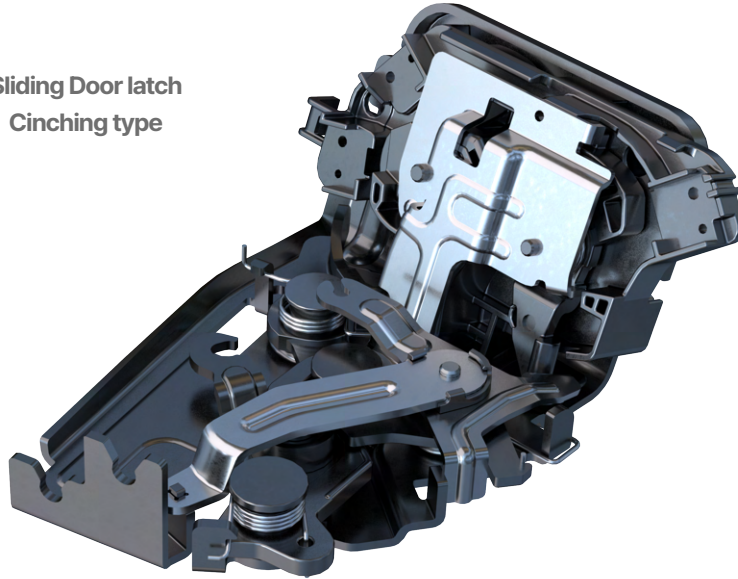
STANDARD Gen2 LATCH



STANDARD Gen3 LATCH



Sliding Door latch  
Cinching type

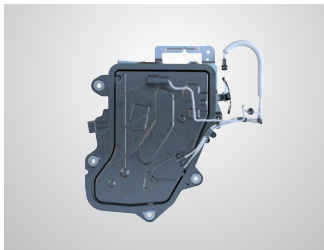


## Slide Door Latching System

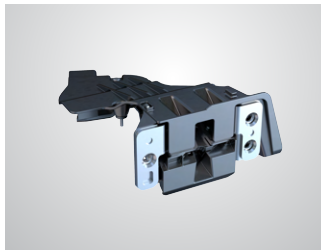
The side door panel of an automobile is installed internally and is responsible for maintaining the locked state of the door when connected to the striker attached to the vehicle's body. The door can be opened using the door handle (inner /outer) and the cable (rod) that connects to it. On the inner handle side, there is a knob, and the door's lock/unlock status can be controlled from the outside using a key, or electronically (via trim buttons or a remote control).

### Main Function

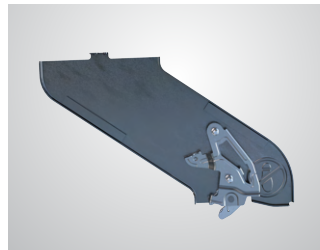
- The release force at stages 1 and 2 when disengaging the striker in the locked state
- Required functionalities
- Regulation of operating force
- Durability and environmental resistance
- Theft prevention and waterproofing, among other aspects



REMOTE CONTROLLER



FRONT LATCH



HOLD OPEN LOCK

# Door Checker

The convenience and safety auxiliary device that controls the full opening of an automobile door and provides step-by-step operating force during door opening and closing.

A device installed on both the car's body and the inside of the door, which is connected and imparts operating force during door open/close actions to control the angle of opening and closing. (Prevents unintended angles caused by slopes, wind, etc., enhancing safety and convenience and preventing accidents.)



PLASTIC (CASE) TYPE



LUXURY TYPE



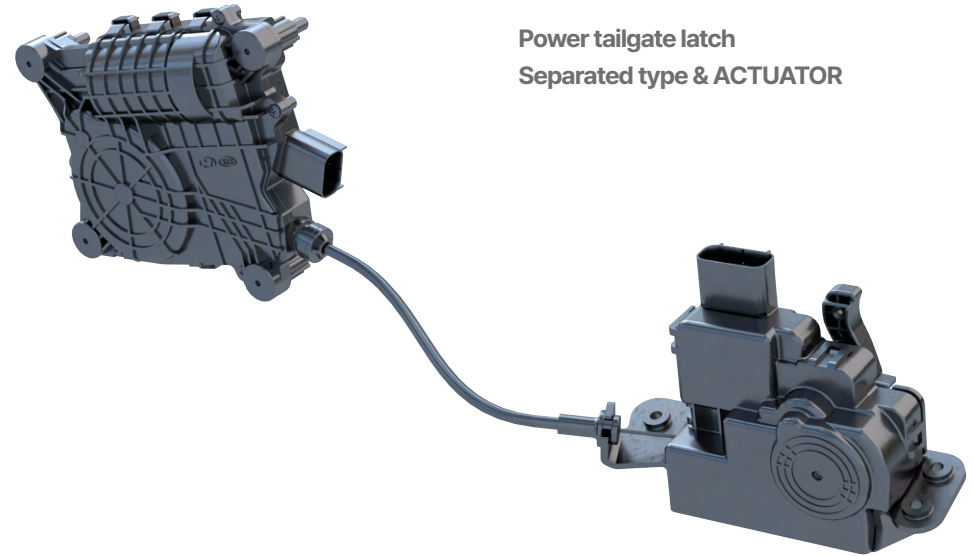
SLIDE TYPE



ROLLER TYPE

# Tailgate Latching System

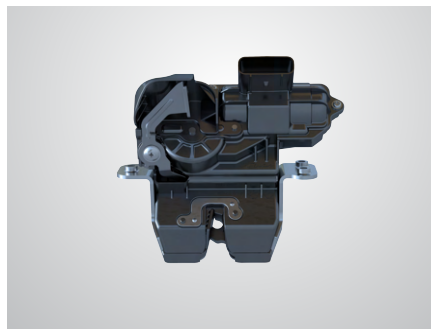
The opening and locking mechanism of an automobile's tailgate. A striker attached to the vehicle's body (or tailgate) that keeps the tailgate closed, and it can be opened using a button, key, handle, handle's touch sensor, remote control, and similar methods. The adoption of the Power Tailgate System is increasing as a trend to enhance convenience. For power closure, it can be operated using a button or remote control.



Power tailgate latch  
Separated type & ACTUATOR



APS ASSEMBLY



POWER TAILGATE LATCH  
(INTEGRATE TYPE)

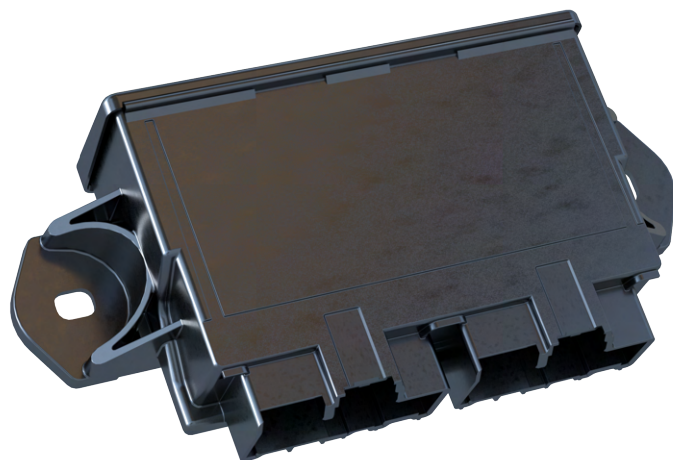


POWER TAILGATE LATCH  
(SEPARATE TYPE)



## Spindle Drive Unit / ecu

New generation drive unit/ ecu. The spindle drive unit and control unit are components that transmit power to open and close the tailgate, and control this process. As indoor noise is reduced, the drive unit should operate in a progressively quieter manner.



Electro Control Unit (ECU)



Spindle Drive Unit

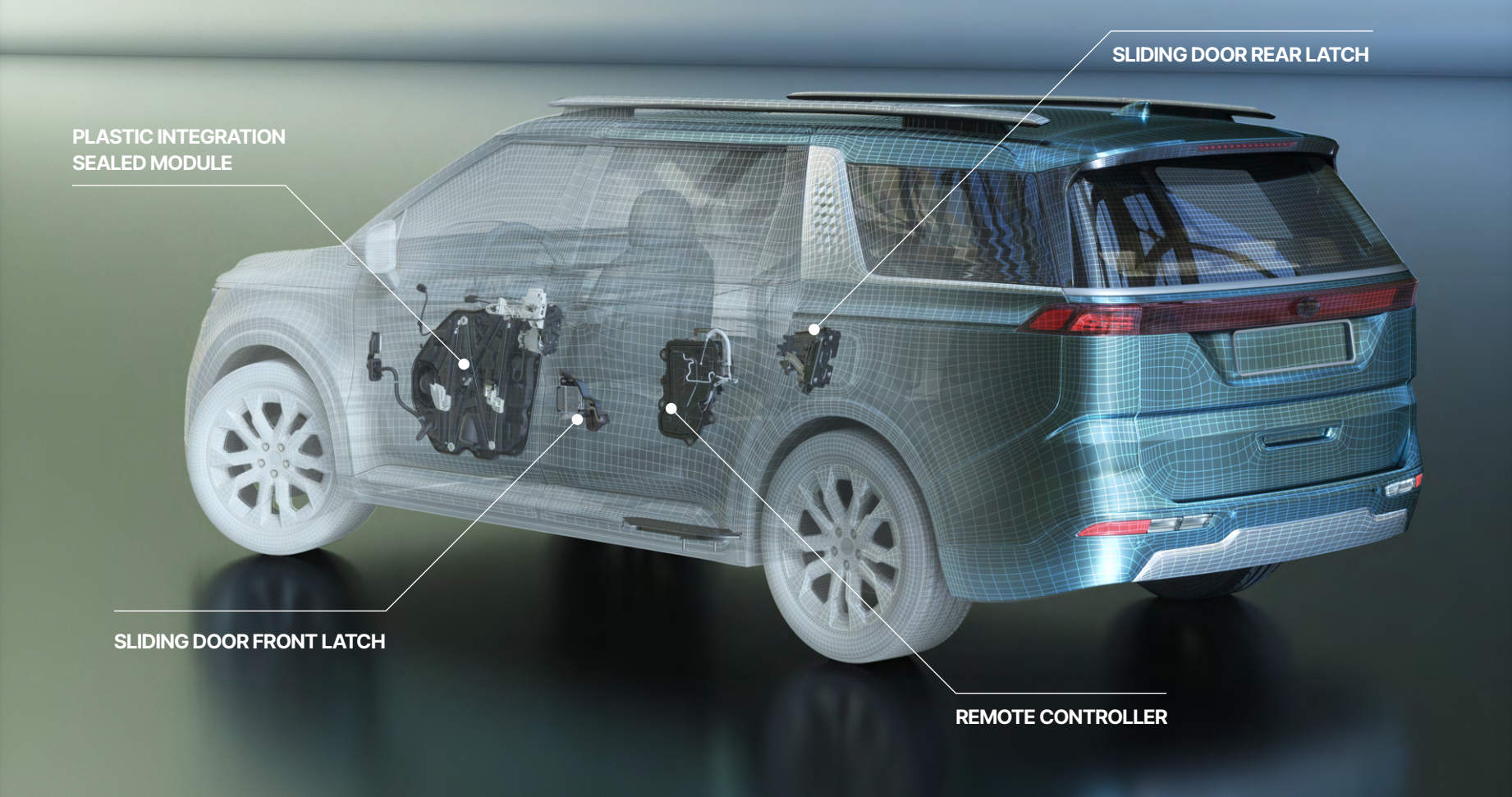
Page 10 of 10





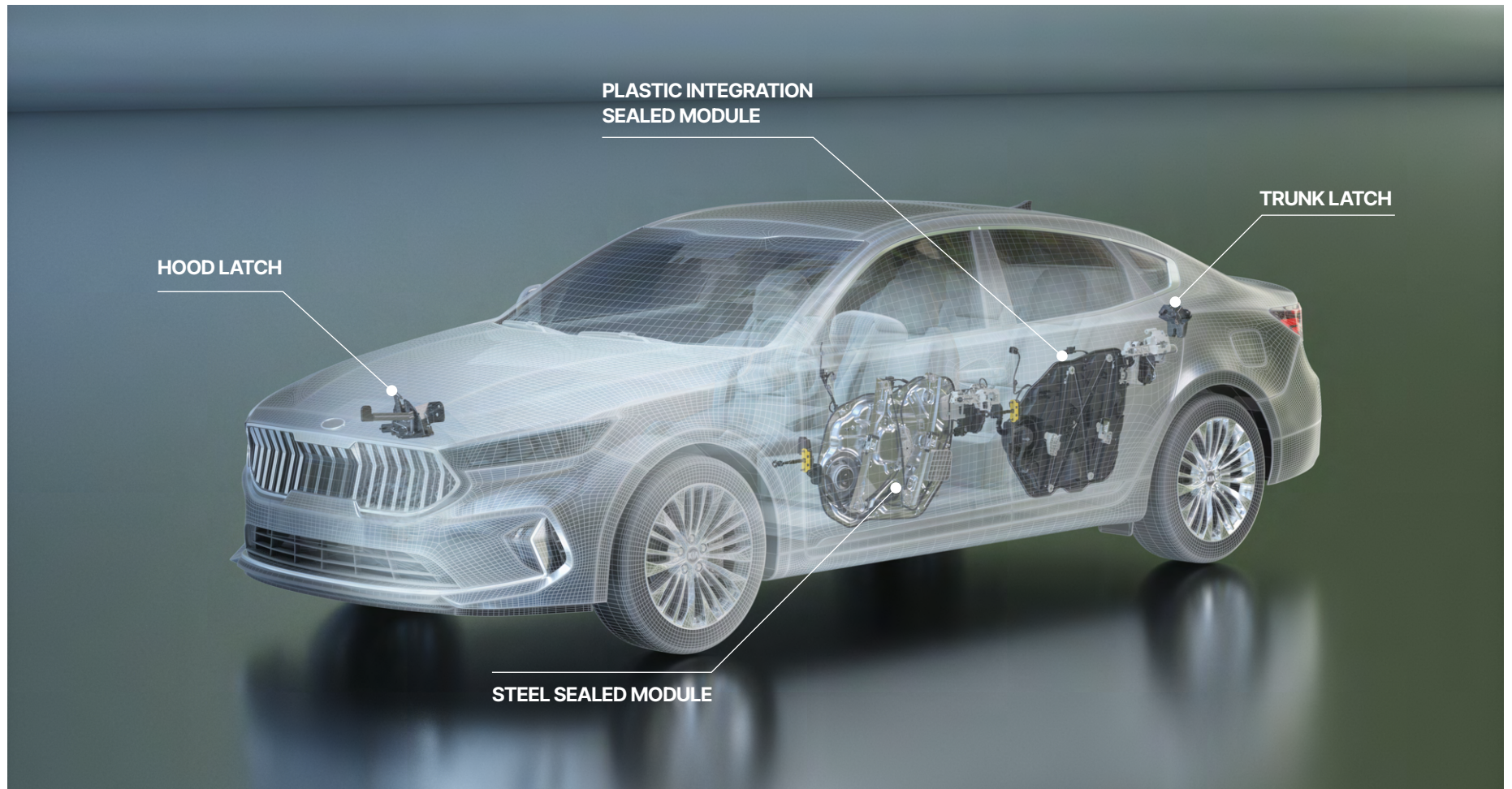


MPV



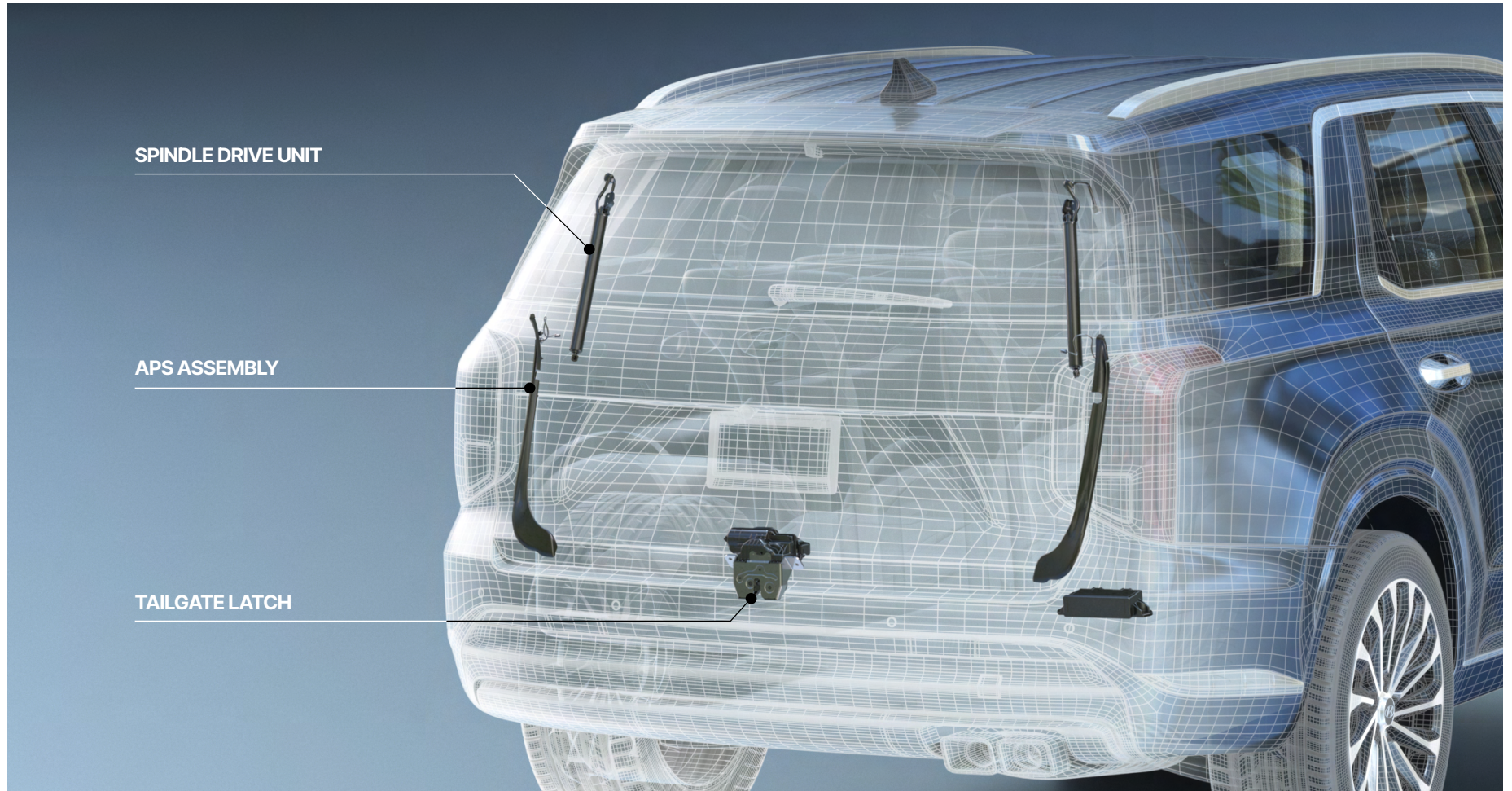


# Sedan





# SUV





---

# DAEDONG ESG



# Daedong HI-LEX Group's Sustainability goals

Daedong Group is implementing "sustainable management" to establish an ESG management system based on environment (E), society (S), and governance (G), setting climate change response, strengthening safety and health, and expanding eco-friendly projects as key areas, and fulfilling social responsibilities.

## Environment



### Energy Conservation

- Carbon neutralization of Daedong HI-LEX Group in 2040 (SCOPE 1/2)
- Reduce Carbon Footprint
- Building an eco-friendly factory through the use of renewable energy (Eco-Plant)
- Development of materials that minimize environmental impact
- Improve performance of LCA

### Reduction of waste through production efficiency

- Elimination of wasteful production through monitoring
- Continuous investment in low-power, high-efficiency automation facilities

## Social



### Human Rights

- Responsibility to respect and uphold human rights
- Expectation that suppliers follow policies like our own

### Community Engagement

- Efforts to engage with the community and have a positive impact on the community.

### Healthy and Safety at Work

- Safety and Health of employees and stakeholders as the top priority for corporate sustainable management activities.

### Diversity and Inclusion

- Prohibit bullying and discrimination in the workplace based on values that respect human rights.
- Encourage a work culture that respects diversity and inclusion.

### Employee Development

- Motivation in personal growth and career development by offering a wide range of education programs.

## Governance



### Corporate Governance

- Daedong HI-LEX Group provides practical Business principals based on our Ethics Policy:
- Compliance with all legislation - including that relating to the international trade of goods, services and technology

### Workplace safety and Health management

- Promotion of a culture of safety across the organization where all employees are encouraged to identify potential safety defects

### Supply Chain Risk Management

- Daedong HI-LEX group is committed to sourcing only responsibly produced materials.
- Establishment of a environment-friendly supply chain by supporting suppliers in improving their business competitiveness as well as their labor human rights and safely.

## Profitable Growth



- Our strategic priorities are based on the goal of not only growing sustainably, but also in a profitable manner
- To be truly sustainable, both environmental and social performance as well as economic performance of the company must be considered

# Sustainability and Engagement Program

We establish target to drive continuous improvement in sustainability and engagement

## Climate-Neutral Supply Chain



- Climate-Neutral Supply Chain until 2040

## Renewable Energy



- 100% renewable energy supply until 2040

## Fresh Water Supply



- 20% reduction of fresh water supply until 2030

## Climate-Neutral Production



- At all Daedong production locations until 2040

## Energy Efficiency



- 1 Gwh Energy(Electricity) Savings by 2030

## Employee Safety



- Achieve ZERO for critical industrial accidents every year





Innovation Beyond Technology



## Contact us

We welcome your questions and feedback  
Please contact your sales representative.



43, Namdongdong-ro 78beon-gil,  
Namdong-gu, Incheon, Republic of Korea  
T : 82-32-716-9480 F : 82-32-818-7636  
E-mail : daedong@hi-lex.co.kr



64, Cheomdan-daero 124, Yeonsu-gu,  
Incheon, Republic of Korea  
T : 82-32-716-9480~2 F : 82-32-716-9484  
E-mail : dddr@hi-lex.co.kr